
Precast Possibility in India

Mahesh Varma

Nandadeep Building Center

Types

■ Small Precast components:

- ❑ Suitable for manual handling
- ❑ Can replace small components in building
- ❑ Economical and fast, but scope is limited to lintels, chajjas, secondary slab like water tank slabs, door frames..

■ Large Precast components:

- ❑ Suitable for machine handling
- ❑ Require large setup for manufacturing, so is investment
- ❑ More suitable to modular housing
- ❑ Very quick in construction

Small Precast component, practices at Nandadeep Precast Prestress Concrete Pvt. Ltd.

21, Raghuv eer Nagar, Opp. SFS, Jalna Road, Aurangabad
431001. India

Ph: +91 240 2332655, 2333289

www.nandadeep.org info@nandadeep.org

General Practice by Nandadeep

Washed Sand



We use only washed sand.

We are having Wash bed of 3.5m.

Advantages.

Silt in sand are removed using sand washing machine.

Silt in concrete reduces the bond strength between sand and cement giving rise to poor concrete.

Lover percentage of silt gives durable and stronger concrete.





**We use weigh batching
for preparing concrete.**



Advantages.

Proportion of Aggregates and cement is maintained to the accuracy of 200 gms. (0.07%). This gives uniform assured quality of concrete every time.





We design our all products on latest computer software.

Advantages.

Computer analysis and designing allow us to check product for static and dynamic loadings. We can calculate the actual deflection under service load. Accurate requirements of reinforcement etc. all this to give full utilization of strength to optimize cost.





**We use welded
reinforcement only
Nandadeep Products.**

Advantages.

Welded reinforcement gives proper bonding between main reinforcement and Distribution Reinforcement.

This welded reinforcement also help in increasing bond strength between reinforcement and Concrete. This increases the load caring capacity of our products.



**We use Nandadeep
Covers in our products
to give Proper cover to
Reinforcement.**

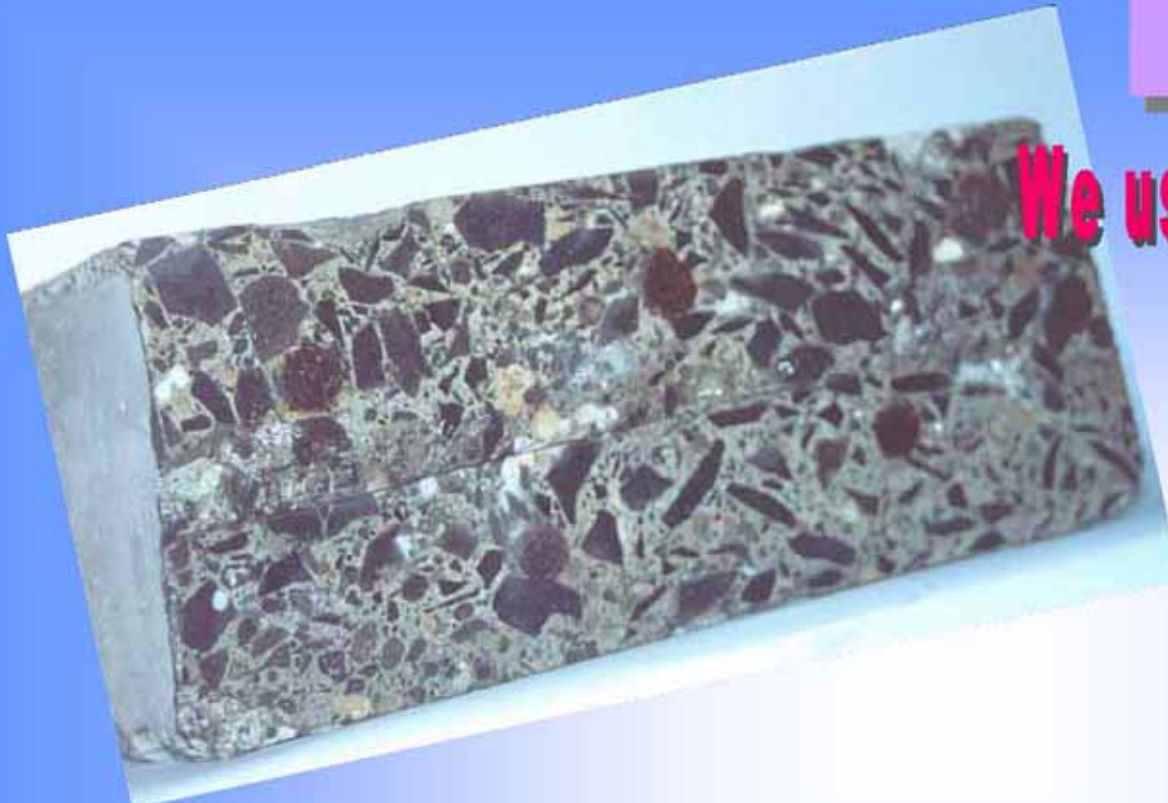


Advantages.

Proper cover gives force transfer from reinforcement to concrete and vice versa.

Cover protects reinforcement from corrosion and this increases the life of Nandadeep Products.





**We use Specially Manufactured
Table vibrators for
concreting.**

Advantages.

Our Specially manufactured table vibrators removes all entrapped air giving high strength in concrete with less water cement ratio. This less water cement ratio gives impervious concrete means more durability to the Nandadeep Products.





**We use High Quality
Hinges Block for
Nandadeep Door Frames.**

Advantages.

Nandadeep Door frames are manufactured using high quality Hinges Blocks. These blocks are manufactured for virgin material. They gives proper bond between Screws and Block. These blocks can be chiseled properly. These block don't get split-up due to number of screws.

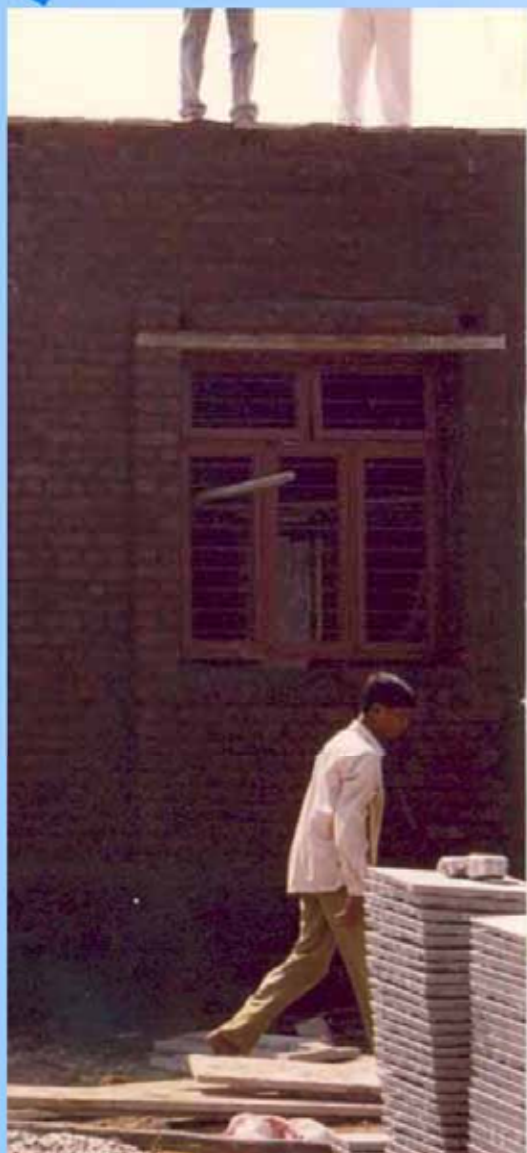


Sample Product 1: Precast Lintel



Advantages. 1/4

Lintels.



1. **Manufactured as Per**
 - a. **C.B.R.I. Roorkee Guide Lines.**
 - b. **I.S.456 -2000.**



2. **Needs no Machinery for Lifting of Lintels.**



3. **Installation can be completed within very short time period.**



4. **Further masonry can be started immediately after installation.**



5. **Nandadeep Lintels saves construction time to great extend..**

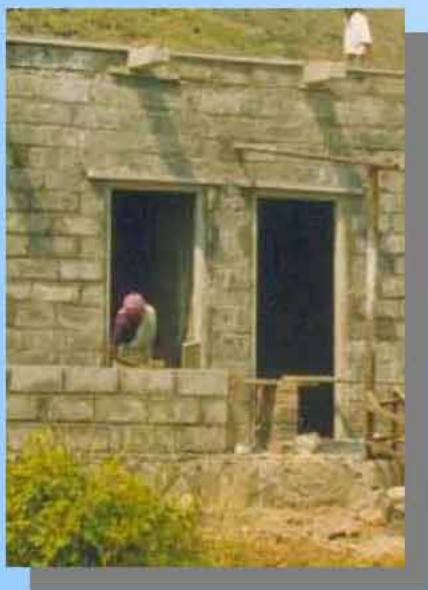
6. **Lintels are easy to Install.**





Advantages. 2/4

Lintels.



7. Nandadeep Precast Lintels are designed to carry Masonry of 1.00 m Height.



8. Distribution Reinforcement is welded to main reinforcement to give better behavior of combined action of concrete and Reinforcement.



9. No form work is required for installation of Nandadeep Precast Lintels



10. No Plaster is required to Nandadeep Lintels from bottom side. This will save money and time.



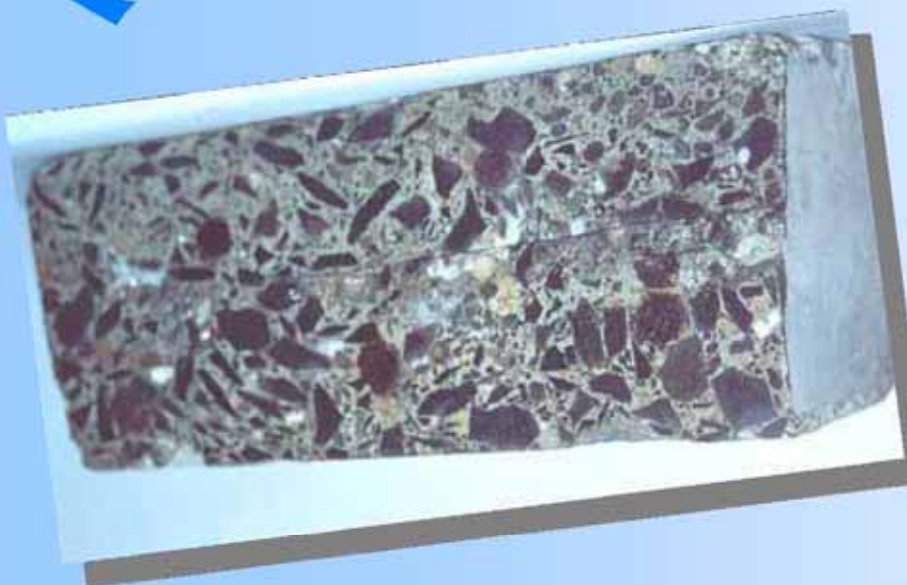
11. Reinforcement in Nandadeep Lintels is provided with proper covers to increase its durability.





Advantages. 3/4

Lintels.



12. No Curing is required to Nandadeep Lintels.



13. Nandadeep Lintels are manufactured using M30 Grade Concrete to give Durable and Stronger lintels than cast-in situ lintels.





Advantages. 4/4

Lintels.



		Nandadeep	Cast in Situ Lintel	Stone Lintels.
1	Shuttering Required	No	Yes	No
2	Bending Strength	Yes	No	No
2	Washed Sand	Yes	No	No
3	High Grade of concrete	Yes	No	No
4	Weigh batched concrete	Yes	No	No
5	Plaster form bottom side	No	Yes	Yes
6	Welded Reinforcement	Yes	No	No
7	Immediate use possible	Yes	No	Yes





Sizes.

Lintels.

Nandadeep Manufactures Lintels in following sizes.

Sr.	Item Code	Description	Approximate Weight Kg	Sr.	Item Code	Description	Approximate Weight Kg.
1.	L2004	Lintel of 2' Length 4" Width	5.50	12.	L6006	Lintel of 6' Length 6" Width	48
2.	L3004	Lintel of 3' Length 4" Width	10	13.	L7006	Lintel of 7' Length 6" Width	58
3.	L4004	Lintel of 4' Length 4" Width	16	14.	L8006	Lintel of 8' Length 6" Width	69
4.	L5004	Lintel of 5' Length 4" Width	18	15.	L2008	Lintel of 2' Length 8" Width	11
5.	L6004	Lintel of 6' Length 4" Width	33	16.	L3008	Lintel of 3' Length 8" Width	18
6.	L7004	Lintel of 7' Length 4" Width	42	17.	L4008	Lintel of 4' Length 8" Width	31
7.	L8004	Lintel of 8' Length 4" Width	47	18.	L5008	Lintel of 5' Length 8" Width	42
8.	L2006	Lintel of 2' Length 6" Width	7.50	19.	L6008	Lintel of 6' Length 8" Width	62.50
9.	L3006	Lintel of 3' Length 6" Width	14	20.	L7008	Lintel of 7' Length 8" Width	83
10.	L4006	Lintel of 4' Length 6" Width	24	21.	L8008	Lintel of 8' Length 8" Width	97
11.	L5006	Lintel of 5' Length 6" Width	28				

[Can be made available as per your requirement on Bulk order.]

*Due to continuous Research and development specification and new shapes and sizes are developed. Kindly get detail before placing order. Also take all necessary care for handling, transportation and erection/ installation of Nandadeep Lintels. It is advised to wear necessary safety equipment to avoid accident. Nandadeep Building Center is not responsible to any damages, losses, or accidents. Our responsibility remains limited to replacement of material purchased from us only.





Technical Details.

Lintels.

1. Concrete

1. M30

2. Reinforcement

1. Main As Per Design
2. Distribution 6mm \varnothing @ 300 mm c/c welded to main reinforcement.

3. Load carrying capacity

1. Dead load of 1m High wall. (Width of wall equal to the width of wall).

4. Bearing at end required.

1. 100 mm on Brick masonry (min).
2. [For detail calculation Click here.](#)



We have many valuable customers for our Lintels.

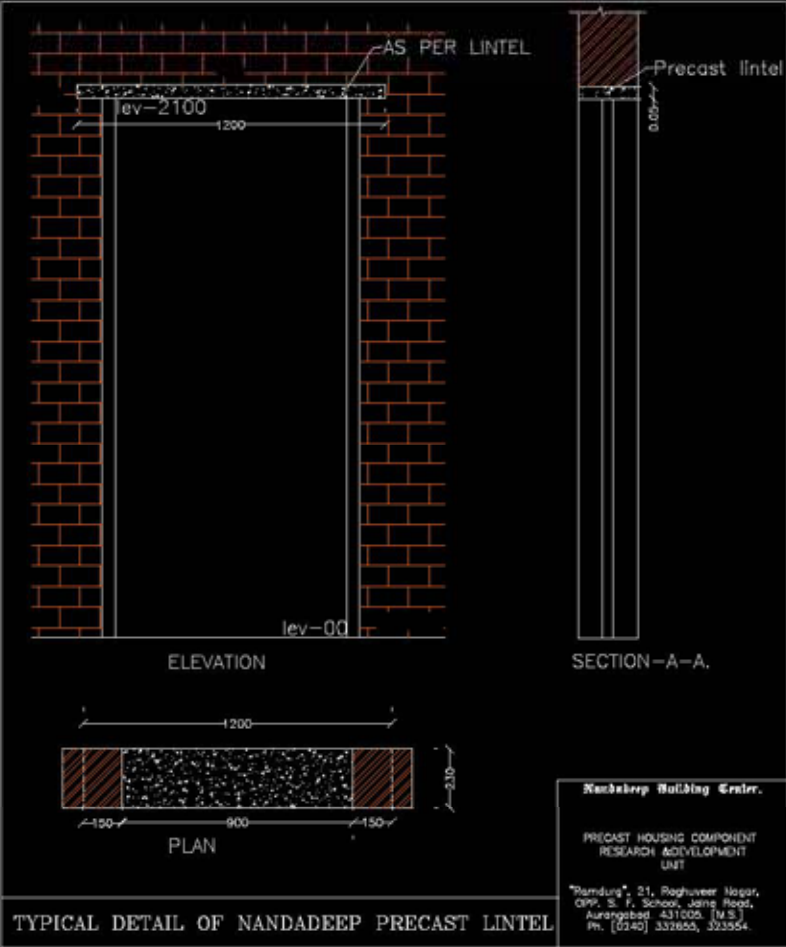
Some of them are as following.

1.	S.S.Y. Ashram	Girnera Tanda, Paithan Road	Aurangabad
2	Sara Builders	Kanchanwadi	Aurangabad
3	R.T.O. Office	Aundha road	Hingoli
4.	Akruti Properties Pvt.Ltd.	Chikalhana M.I.D.C.	Aurangabad
5.	Sayadri Builders	Jai Towers	Aurangabad.
6.	N.R.B. Bearing	M.I.D.C., Waluj	Aurangabad.
7.	Infotech Systems Pvt.Ltd.	M.I.D.C. Waluj	Aurangabad.
8.	Laxmikant Nagar	Indewadi, Ambad Road, Jalna	Jalna
9.	Pharmacitical Unit	Near Rail way Gate, Newasa Road	Nasik
10.	Mr. Mahajan Suhash		Manwat

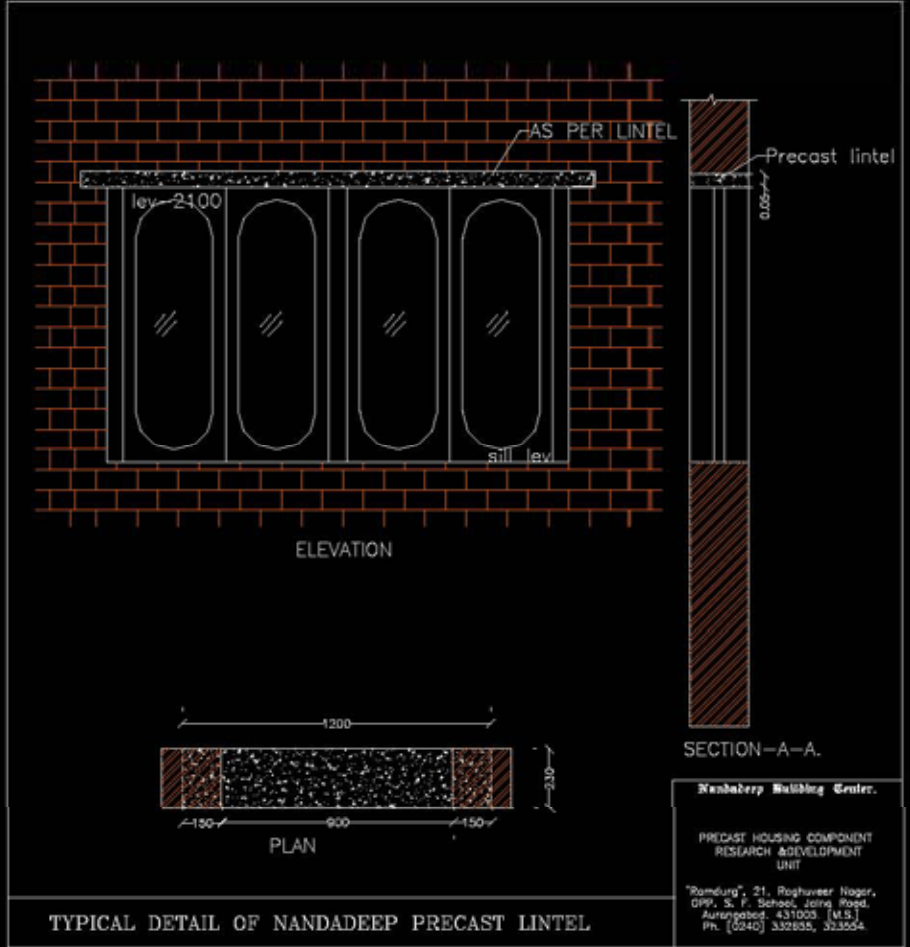
And many more..



Lintels.



TYPICAL DETAIL OF NANDADEEP PRECAST LINTEL



TYPICAL DETAIL OF NANDADEEP PRECAST LINTEL



Sample Product 2: Steps



Advantages.

Steps



- 1. Manufactured as Per
a. I.S.456 -2000.**
- 2. Needs no Machinery for Lifting of Steps.**
- 3. Installation can be completed within very short time period.**
- 4. Steps can be utilized immediately after installing counter weight.**
- 5. Nandadeep Steps saves construction time to great extend.**
- 6. Any type of Railing can be fixed to Nandadeep Steps.**
- 7. Nandadeep steps are thinner in thickness gives good aesthetical look.**





Advantages.

Steps



8. Nandadeep Precast Steps are designed to carry Live Load of 3 Kn/sq.m.
9. Nandadeep Precast steps are designed for cantilever action.
10. Distribution Reinforcement is welded to main reinforcement to give better behavior of combined action of concrete and Reinforcement.
11. No Plaster is required to Nandadeep Precast Steps. This will save money and time.
12. Reinforcement in Nandadeep Steps is provided with proper covers to increase its durability.





Advantages.

Steps



14. No Curing is required this helps early utilization of construction.
15. M.S. Flat is provided along the edges to prevent breakages during uses.
16. Nandadeep Steps are manufactured using M30 Grade Concrete to give Durable and Stronger slabs than cast-in situ steps.
17. Nandadeep steps need only support during construction on cantilever end. This support can be removed after counter weight. This saves lot on shuttering expenses.



Other Products available

- 'L' Type cantilever step
- Chajja
- Precast beam plank system
- Channel Slab
- Door Frames
- Concrete covering

Large Precast component, possibility from global scenario

Precast Building

- The product range for buildings is extensive,
 - ❑ Pocket foundation
 - ❑ Columns
 - ❑ Different type of beams & slabs
 - ❑ Wall panel
 - ❑ Roofing material



Complete Precast Building with wall panel, beam, and column length exceed 10 m



Precast Pocket foundation

- The pocket foundation is normally used over the foundation plate cast on site.
- The Purpose of pocket foundation is to transfer the load to foundation plate (RCC), and to hold the column when erecting.
- Gap from all side between column and pocket foundation allow citu grout.



Precast Column

Typically, precast column are 5m to 12m in height.
Column is connected to footing, and then to beams through corbel, or at top...



Column also supports
the wall panel through
use of metallic corbels

Precast Beams for industrial structure



Precast Beam and Roof



Precast beam column connection



Horizontal Precast Wall Panel



Vertical wall panel



Our Strengths

- Through knowledge and exposure of Precast construction and connection
- Experience in design, manufacturing and execution of Precast components
- Strong experience and expertise for structural design